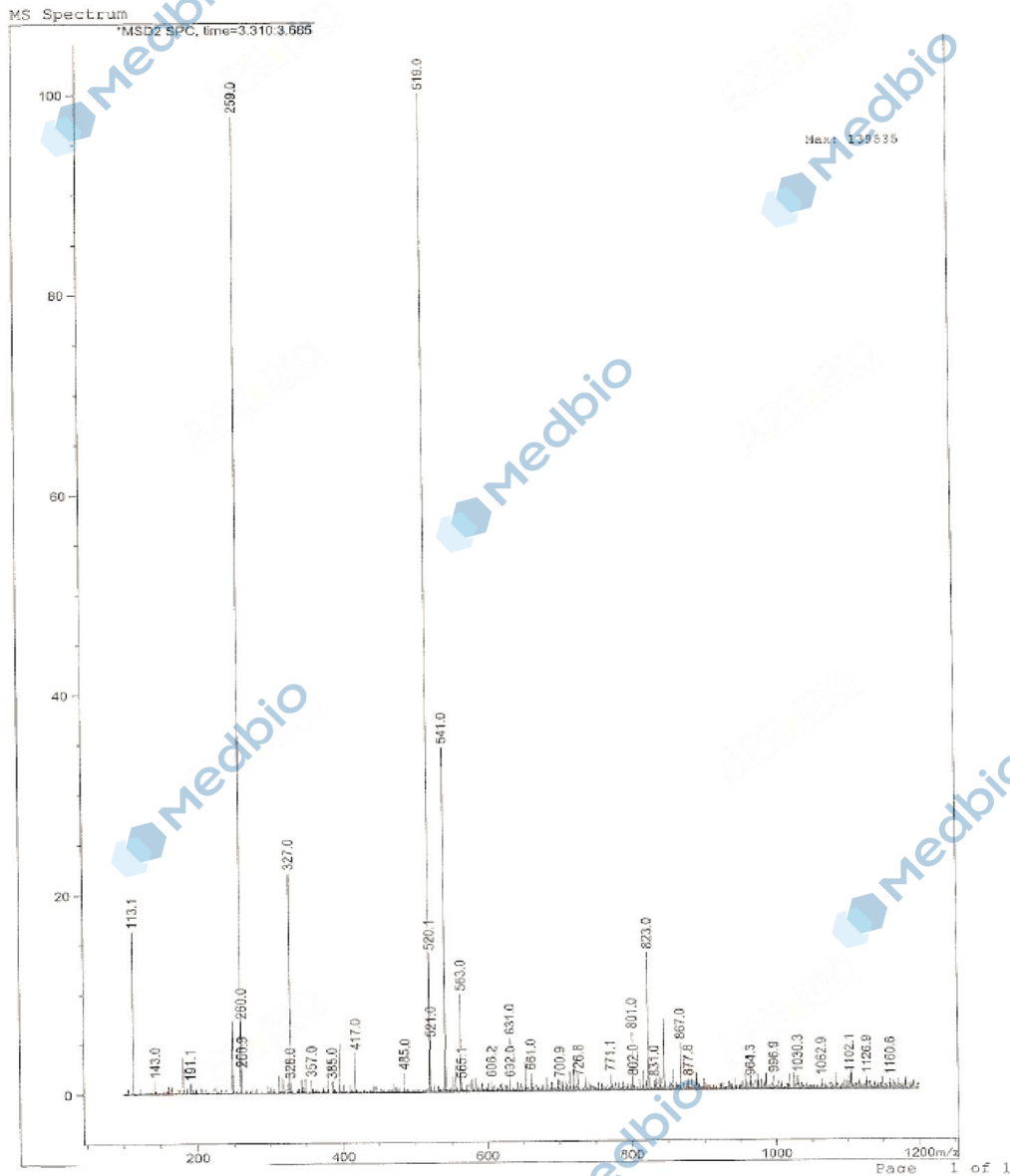


Sample Name: D-Fructose-6-phosphate (sodium salt)

=====
Acq. Operator: Acacia
Probe: ESI
Gas Temp: 350° C Gas Flow: 11L/min
Nebulizer: 50psi VCap: 4000v Fragmentor: 70v
Reference: m/z 121.050873, 922.009798
T. Flow: 0.3ml/min B.conc: 20%H2O/80%ACN
=====

Result



Molecular Weight: 304.1

m/z([M-2Na]-) Base Peak: 259.0